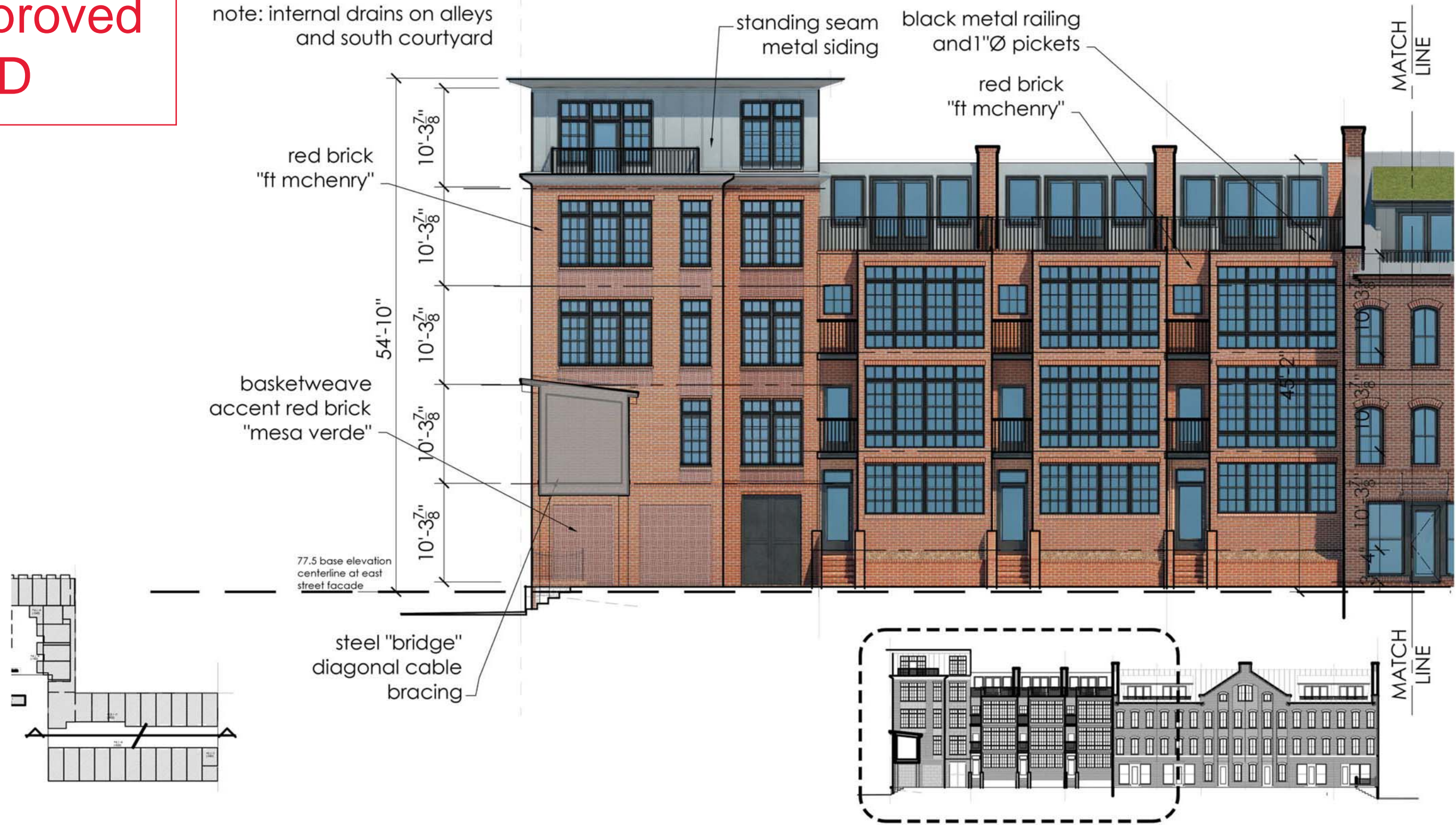


Approved
PUD

note: internal drains on alleys
and south courtyard



Mews looking north

-

West end

1311 E Street, SE Washington DC 20003

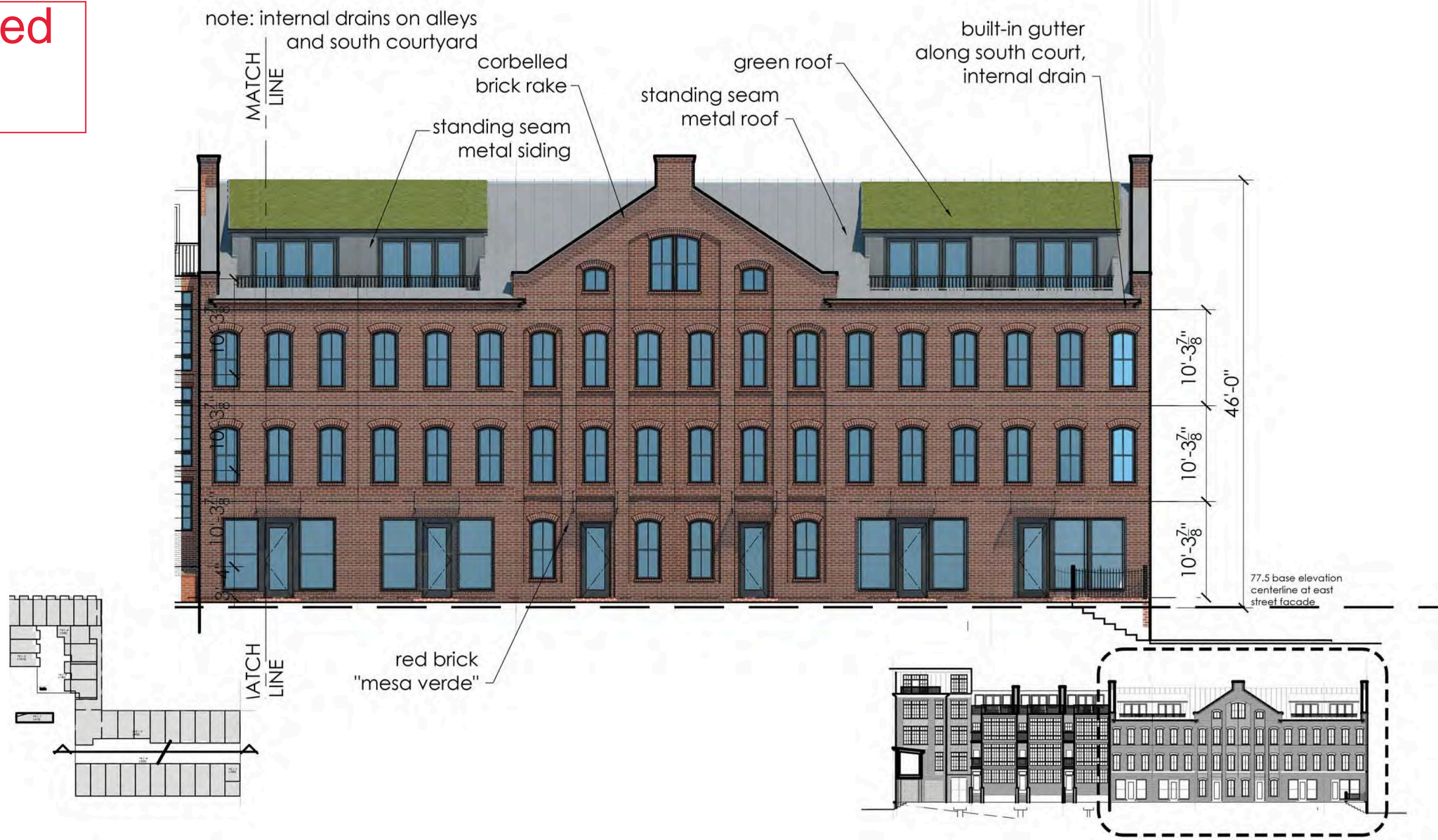


20 June 2016

ZONING COMMISSION
District of Columbia
CASE NO.15-13A
EXHIBIT NO.1C5

A-36

Approved
PUD



Mews looking north - East end

1311 E Street, SE Washington DC 20003



20 June 2016

A . 37

Approved
PUD



Mews looking south - East end

1311 E Street, SE Washington DC 20003

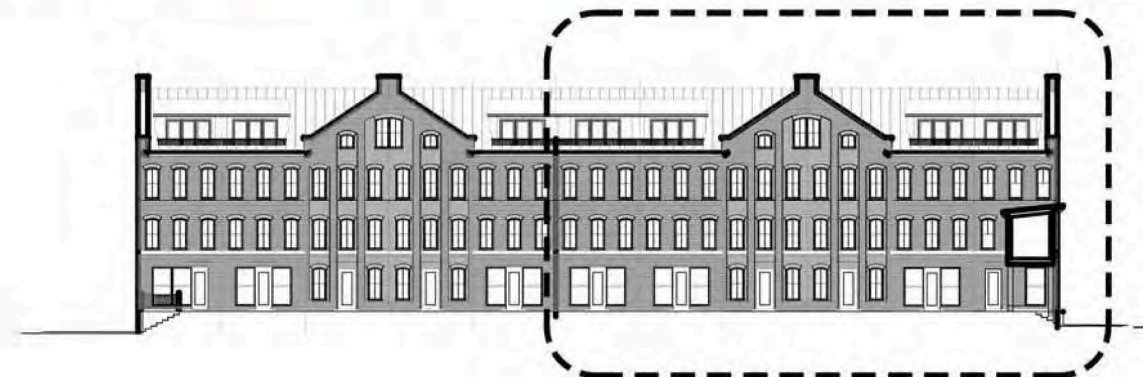
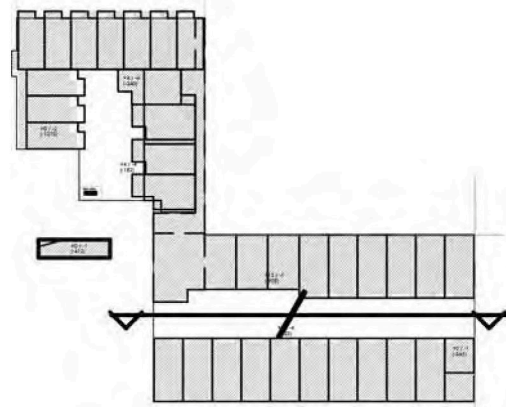
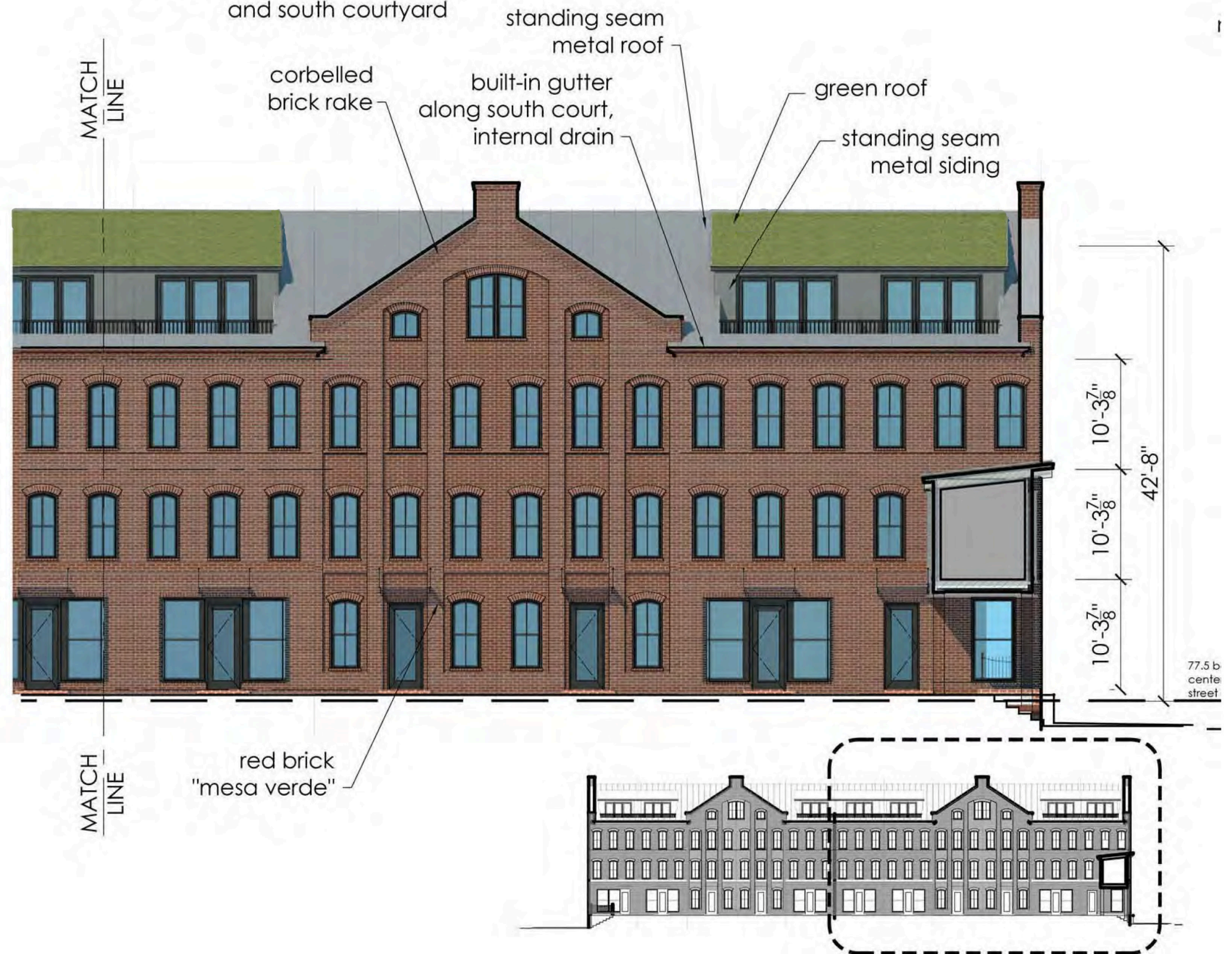


20 June 2016

ZONING COMMISSION
District of Columbia
CASE NO. 15-13
EXHIBIT NO. 47B3
A. 38

Approved
PUD

note: internal drains on alleys
and south courtyard



Mews looking south - West end

1311 E Street, SE Washington DC 20003



20 June 2016

A . 39